

FREE with the Oslo Pass

| | WITH OSLO PASS | NORMAL PRICE A/C/S |
|---|-------------------|--------------------------|
| MUSEUMS AND ATTRACTIONS | | |
| AKERSHUS CASTLE | FREE | 100/40/60 |
| ASTRUP FEARNLEY MUSEET | FREE | 130/0/90 |
| EKEBERGPARKEN´S MUSEUM | FREE | 30/15/15 |
| HENIE-ONSTAD KUNSTSENTER | FREE | 120/0/80 |
| HISTORICAL MUSEUM | FREE | 120/0/90 |
| HOLMENKOLLEN | FREE | 150/75/130 |
| HOLOCAUST CENTER | FREE | 70/30/50 |
| INTERCULTURAL MUSEUM | FREE | FREE |
| THE INTERNATIONAL MUSEUM OF CHILDREN'S ART | FREE | 75/40/40 |
| THE KON-TIKI MUSEUM | FREE | 120/50/90 |
| THE ARTISTS´ HOUSE | FREE | 100/0/100 |
| THE LABOUR MUSEUM | FREE | FREE |
| THE MUNCH MUSEUM | FREE | 120/0/120 |
| THE MUSEUM OF ARCHITECTURE | FREE | 50/0/30 |
| MUSEUM OF OSLO | FREE | 90/0/70 |
| NATURAL HISTORY MUSEUM | FREE | 120/60/60 |
| NOBEL PEACE CENTER | FREE | 150/50/100 |
| THE NORDIC BIBLE MUSEUM | FREE | 75/0/75 |
| THE NORWEGIAN MUSEUM OF CULTURAL HISTORY | FREE | 160/40/95 |
| NORWEGIAN RESISTANCE MUSEUM | FREE | 60/30/30 |
| THE NORWEGIAN ARMED FORCES MUSEUM | FREE | FREE |
| NORWEGIAN MARITIME MUSEUM | FREE | 120/50/90 |
| OSLO CITY HALL | FREE | FREE |
| OSLO JEWISH MUSEUM | FREE | 60/30/40 |
| OSLO REPTILE PARK | FREE | 150/120/120 |
| OSLO TRANSPORT MUSEUM | FREE | 50/25/50 |

FREE with the Oslo Pass

| | WITH OSLO PASS | NORMAL PRICE A/C/S |
|-------------------------|-------------------|--------------------------|
| MUSEUMS AND ATTRACTIONS | | |
| THE POLAR SHIP FRAM | FREE | 120/50/90 |
| POPSENTERET | FREE | 125/75/75 |
| TEKNISK MUSEUM | FREE | 165/110/110 |
| THE SALMON | FREE | FREE |
| THE VIGELAND MUSEUM | FREE | 100/0/50 |
| VIKING SHIP MUSEUM | FREE | 120/0/90 |

TRANSPORT & TRAVEL

| | | |
|--|------|------------|
| RUTER - PUBLIC TRANSPORTATION * 24h ticket 1 zone | FREE | 111/56/56* |
| FERRY TO MUSEUMS AT BYGDØY * One way purchased in advance | FREE | 52/26/26* |

SIGHTSEEING

| | | |
|---|-------|-------------|
| OSLO GUIDE BUREAU WALKING TOUR | FREE | 200/100/200 |
| OURWAY TOURS WALKING TOUR | FREE | 300/150/300 |
| MINI CRUISE HOP ON - HOP OFF * Free with 72h Oslo Pass | FREE* | 235/118/235 |

ACTIVITIES & SPECIAL OFFERS

| | | |
|--|-------|------------|
| FROGNERBADET POOL * Prices for weekdays | FREE* | 105/25/75* |
|--|-------|------------|

VisitOSLO AS accepts no responsibility for any errors or alterations.

DISCOUNTS with the Oslo Pass

| | WITH OSLO PASS | NORMAL PRICE A/C/S |
|--------------------------------|------------------------------|--------------------------|
| SIGHTSEEING | | |
| THE OSLO TOUR - WALKING TOURS | 15% DISCOUNT | |
| CITY CRUISE HOP ON - HOP OFF | 15% DISCOUNT | |
| FJORD SIGHTSEEING | 15% DISCOUNT | |
| NORWEGIAN EVENING ON THE FJORD | 15% DISCOUNT | |
| VIKING BIKING | 30% DISCOUNT ON GUIDED TOURS | |

ACTIVITIES & SPECIAL OFFERS

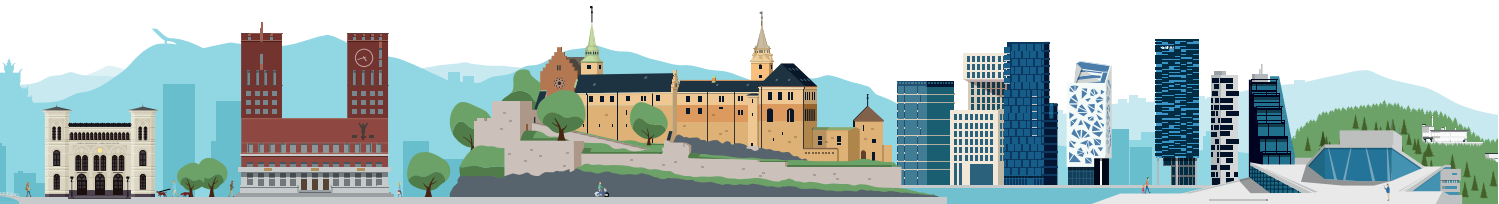
| | | |
|---|---|--|
| MAD GOATS | 15 % DISCOUNT ON TOURS AND COURSES | |
| MODERN ACTIVITY CENTER | 15 % DISCOUNT ON WIND TUNNEL | |
| NORTHERN LIGHTS XPERIUM | 20% DISCOUNT ON ENTRANCE | |
| THE NORWEGIAN NATIONAL OPERA & BALLET | 120/70/120 | |
| 20% DISCOUNT ON GUIDED TOURS AND SELECTED ITEMS IN THE SHOP | | |
| OSLO PHILHARMONIC ORCHESTRA | 20% DISCOUNT ON TICKETS PURCHASED AT THE BOX OFFICE | |
| OSLO KLATREPARK | 20% DISC. ON CLIMBING PASS FOR DROP- INS | |
| OSLO SUMMER PARK | 15% DISC. ON CLIMBING PASS FOR DROP- INS | |
| OSLO WINTERPARK | 15% DISCOUNT ON SKI HIRE | |
| SALT | 20% DISCOUNT ON SAUNA SESSION AND WEEKDAY BATH | |
| TUSENFRYD AMUSEMENT PARK | 20% DISCOUNT ON ENTRY TICKET | |
| THE VIKING PLANET | 15% DISCOUNT ON ENTRANCE | |

RESTAURANTS

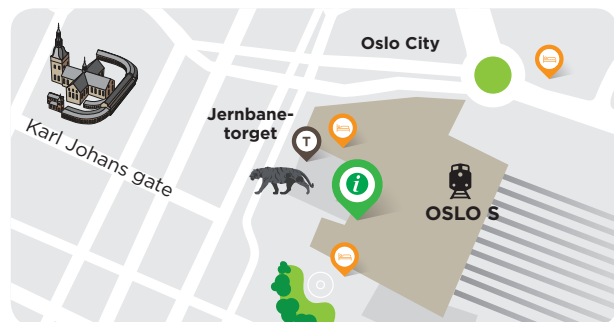
| | | |
|--|--------------------------------|--|
| DEN GLADE GRIS | 20% DISCOUNT ON FOOD | |
| DØGNVILL BURGER VULKAN | 20% DISCOUNT ON FOOD* | |
| * Only Mon-Thu 15-17, Fri 12-17 and not on take away | | |
| HARD ROCK CAFE | 20% DISCOUNT ON FOOD | |
| JOHNNYY ROCKETS | 20% DISCOUNT ON FOOD | |
| KAFFISTOVA | 20% DISCOUNT ON FOOD | |
| MAGIC ICE | 20% DISCOUNT ON ENTRANCE | |
| MAMMA PIZZA | 20% DISCOUNT ON MAIN DISH | |
| RORBUA | 20% DISCOUNT ON FOOD | |
| THE SALMON | 20% DISCOUNT ON SALMON TRILOGY | |
| THE SCOTSMAN | 20% DISCOUNT ON FOOD | |

SHOPPING

| | | |
|-----------------------------|--|--|
| NORWAY SHOP | 10% DISCOUNT ON Arctic Circle Collection | |
| OSLO CRUISE TERMINAL | 10% DISCOUNT ON DALE OF NORWAY | |
| TREGAARDENS CHRISTMAS HOUSE | 10% DISCOUNT IN THE STORE | |



Oslo Pass Sales Points



Oslo Visitor Centre
Østbanehallen (Jernbanetorget 1)
by the Oslo Central Station

- **Ruter's Customer Centre**
Jernbanetorget 1
- **Hotel receptions**
- **Båtservice Sightseeing**
Rådhusbrygge pier 3
- **Ferries**
Color Line and DFDS
- **Ekeberg and Bogstad Camping**
- **Museums**
Nobel Peace Center,
Norwegian Maritime Museum and
Norwegian Resistance Museum
- **Shops**
Cruise Terminal
- **Online at www.visitoslo.com**

Photo: Einar Aslaksen - Astrup Pearnley Museet / Edvard Munch, The Scream, 1910 © Munchmuseet / Ruth Marie Vainne - Den Norske Opera & Ballet

The Oslo Pass app



- Download the free Oslo Pass app.
- Use your credit card to buy your Oslo Pass.
 - Activate the Oslo Pass upon first use.
 - The Oslo Pass app works offline except when purchasing and activating the Oslo Pass and updating the transportation control code.

Prices Oslo Pass 2020

| Pass type | 24 hours | 48 hours | 72 hours |
|-----------|----------|----------|----------|
| Adult | 445 NOK | 655 NOK | 820 NOK |
| Child | 235 NOK | 325 NOK | 410 NOK |
| Senior | 355 NOK | 520 NOK | 655 NOK |

Child: 6-17 years old, senior: 67+. Please note that the museums and attractions operate with different age limits for children. Student up to 30 years: 20% discount only offered at Oslo Visitor Centre and Ruter's Customer Centre.



See more. Pay less.

- Free entry to 30 museums
- Free public transport
- Other discounts



Oslo Pass – The Official City Card

Visit www.visitoslo.com for a complete list of sales points.

